



## FIG. 400

## LIGHT DUTY SPRING HANGER

ENGINEERED SPRING SUPPORTS

[www.pipingtech.com/fig400](http://www.pipingtech.com/fig400)

- SERVICES:** Recommended for light loads where vertical movement does not exceed 1/4".
- MATERIALS:** Carbon steel spring coil and casing.
- APPROVALS:** Complies with Federal Specification WW-H-171D (Type 49) and Manufacturers Standardization Society SP-69 (Type 48).
- INSTALLATION:** Designed for attachment to its supporting member by screwing a rod into the top cap of the hanger the full depth of the cap.
- SELECTION:** Normally done by approximate methods taking into account weight of pipe, covering, contents, and major fittings.
- APPLICATION:** The Light Duty Spring Hanger is used for the support of miscellaneous field run piping systems subject to slight (up to 1/4") vertical displacement. It is designed for the incorporation in rod hangers with a load coupling provided for spring loading. Amount of spring loading can be approximated by relating "B" dimension with spring deflection.
- ORDERING:** Specify figure number, spring size, type, description, finish.

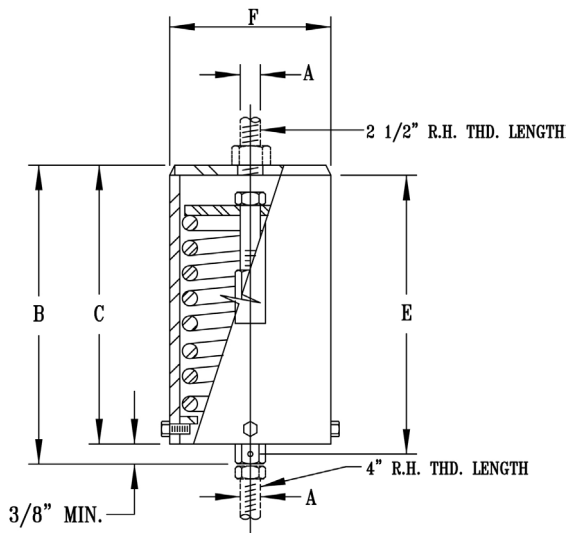


FIG. 400 LIGHT DUTY VARIABLE SPRING HANGERS

SPRING SIZE NO.	A	B		C	D	E (ROD TAKE OUT)	F	MAXIMUM DEFLECTION	MAXIMUM LOAD lb.	SPRING DEFLECTION lb. per in.	WEIGHT lb. per 100
		MIN.	MAX.								
1	3/8	4 1/2	6 1/2	4 1/8	3 3/4	2 3/4	1 5/8	2	52	26	160
2	3/8	4 1/2	6 1/4	4 1/8	3 3/4	3 1/8	1 5/8	1 3/4	115	66	238
3	1/2	5 7/8	7 3/4	5 1/2	5	2 3/4	3 1/2	1 7/8	163	87	287
4	1/2	5 7/8	7 5/8	5 1/2	5	3 1/4	3 1/2	1 3/4	266	152	350
5	5/8	6 3/4	8 3/4	6 3/8	5 3/4	4 1/8	4 1/2	2	400	200	680
6	3/4	8 3/8	10 7/8	8	7 3/8	4 5/8	4 1/2	2 1/2	600	240	982

SPRING.XLS-01/18/10