

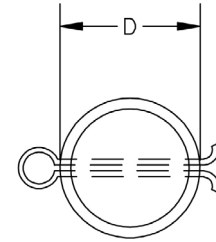
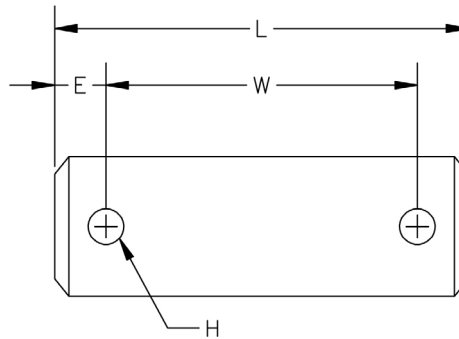


FIG. 91

CLEVIS PIN WITH COTTERS

www.pipingtech.com/fig91

- MATERIAL:** Carbon Steel
- FINISH:** Black or galvanized.
- SERVICE:** To be used as an option to support the load on Type C variable spring hangers, Type C constant supports, Fig. 95 clevises, and Fig. 20 welded beam attachments.
- ORDERING:** Specify figure number, pin diameter, description, finish, and if cotter pins are needed. If planning to use the clevis pin with any of the above mentioned figures, please list which figure in the order instructions.



SUPPORT ASSEMBLY COMPONENTS

PIN DIA. D	MAX. LOAD (lb.)		WEIGHT (lb.)	L	W	E	H	COTTER PIN SIZE
	@ 650 °F	@ 750 °F						
1/2	730	572	0.12	2 7/8	2 1/8	3/8	3/32	1/8 x 1 1/4
5/8	1,350	1,057	0.18	3 1/8	2 3/8	3/8	3/32	1/8 x 1 1/4
3/4	2,160	1,691	0.29	3 5/8	2 7/8	3/8	7/32	3/16 x 1 1/2
7/8	3,230	2,529	0.47	4	3 1/4	3/8	7/32	3/16 x 1 1/2
1	4,480	3,508	0.67	4	3 1/4	3/8	7/32	3/16 x 2
1 1/8	5,900	4,620	1.00	4 3/4	4	3/8	7/32	3/16 x 2
1 1/4	7,410	5,802	1.70	4 7/8	4 1/4	3/8	9/32	1/4 x 2
1 3/8	9,500	7,439	2.10	5 3/8	4 3/8	1/2	9/32	1/4 x 2
1 5/8	13,800	10,805	3.30	6	5	1/2	9/32	1/4 x 2
1 7/8	18,600	14,564	4.80	7 1/8	5 7/8	5/8	3/8	3/8 x 3
2 1/4	24,600	19,262	7.20	7 1/8	5 7/8	5/8	3/8	3/8 x 4
2 1/2	32,300	25,291	9.30	7 5/8	6 3/8	5/8	3/8	3/8 x 4
2 3/4	39,800	31,163	12.50	7 7/8	6 5/8	5/8	3/8	3/8 x 4
3	49,400	38,680	16.60	8 1/4	6 3/4	3/4	1/2	1/2 x 5
3 1/4	60,100	47,058	20.00	8 1/2	7	3/4	1/2	1/2 x 5
3 1/2	71,900	56,298	23.90	8 3/4	7 1/4	3/4	1/2	1/2 x 5
3 3/4	84,700	66,320	25.10	9 1/2	8	3/4	1/2	1/2 x 6
4	98,500	77,125	34.80	9 3/4	8 1/4	3/4	1/2	1/2 x 6