



FIG. 200

TRAPEZE ROLLER HANGER

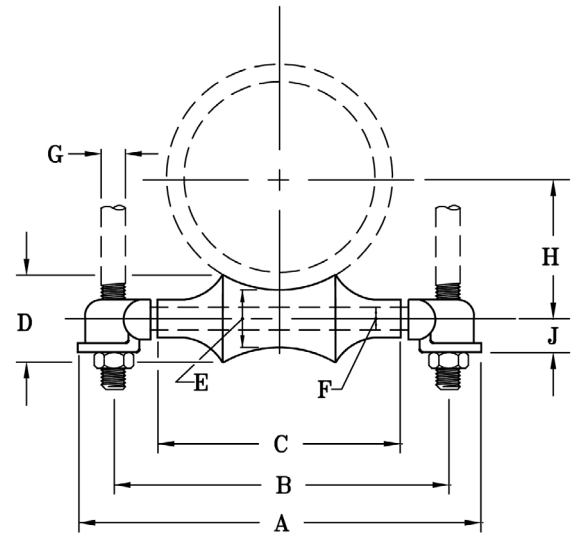
www.pipingtech.com/fig200

MATERIAL: Cast iron roll and sockets; steel roll rod.
SERVICE: For suspension of pipe from two rods where longitudinal movement due to expansion or contraction may occur.

ADJUSTMENT: Adjustment socket permits vertical adjustment at the roll.

- HOW TO SIZE:**
1. If the roll is to support non-insulated pipe, select the size directly from nominal pipe size.
 2. If used with pipe covering protection saddle, see Pages 146-147 for size of pipe roll.
 3. If roll is to support covered pipe, select the nominal pipe size (column 1) which corresponds to the O.D. of covering and saddle (column 2).

ORDERING: Specify figure number, nominal pipe size, description and finish.



SUPPORT ASSEMBLY COMPONENTS

NOMINAL PIPE SIZE	MAX. O.D. OF COVERING	ADJUSTED SOCKET NO.	MAX. RECOM. SAFE LOAD (lb.)	APPROX. WEIGHT (lb. per 100)	A	B	C	D	E	F	G	H	J
1	2	1 - 3/8	600	45	4 1/8	3	1 1/2	1	3/4	3/8	3/8	1 1/16	9/16
1 1/4	2 1/2	1 - 3/8	600	48	4 1/2	3 3/8	1 7/8	1 1/16	3/4	3/8	3/8	1 1/4	9/16
1 1/2	2 3/4	1 - 3/8	600	51	4 3/4	3 5/8	2 1/8	1 1/8	3/4	3/8	3/8	1 3/8	9/16
2	3 1/4	1 - 3/8	600	57	5 1/4	4 1/8	2 5/8	1 3/16	3/4	3/8	3/8	1 5/8	9/16
2 1/2	3 3/4	2 - 1/2	660	100	6 1/4	4 7/8	3 1/8	1 3/8	7/8	1/2	1/2	1 15/16	11/16
3	4 1/2	2 - 1/2	700	110	6 7/8	5 1/2	3 3/4	1 7/16	7/8	1/2	1/2	2 1/4	11/16
3 1/2	5	2 - 1/2	750	135	7 1/2	6 1/8	4 1/4	1 5/8	1	1/2	1/2	2 9/16	3/4
		3 - 1/2		150	7 3/4	6 1/4					5/8		3/4
4	5 1/2	2 - 1/2	750	150	8	6 5/8	4 3/4	1 3/4	1	1/2	1/2	2 13/16	3/4
		3 - 1/2		165	8 1/4	6 3/4					5/8		3/4
5	7	2 - 5/8	750	226	9 7/16	8 1/16	5 13/16	2	1 1/8	5/8	1/2	3 7/16	13/16
		3 - 5/8		257	9 11/16						5/8		7/8
6	8 1/4	2 - 3/4	1,070	378	10 15/16	9 9/16	6 7/8	2 5/16	1 1/4	3/4	1/2	4	7/8
		3 - 3/4		416	11 3/16						5/8		1
		4 - 3/4		445	11 7/16						3/4		1
8	10 1/2	2 - 7/8	1,350	585	13 5/16	11 15/16	8 7/8	2 13/16	1 1/2	7/8	1/2	5 1/8	15/16
		3 - 7/8		625	13 9/16						5/8		1 1/16
		4 - 7/8		690	13 13/16						3/4		1 3/16
		5 - 7/8		715	14 1/16						7/8		1 1/8
10	12 3/4	2 - 7/8	1,730	838	15 7/16	14 1/16	11	3 3/8	1 3/4	7/8	1/2	6 3/8	15/16
		3 - 7/8		862	15 11/16						5/8		1 1/16
		4 - 7/8		920	15 15/16						3/4		1 3/16
		5 - 7/8		950	16 3/16						7/8		1 1/8
12	14 3/4	3 - 1	2,400	1,465	17 7/16	15 13/16	12 1/2	3 7/8	2	1	5/8	7 7/16	1 1/8
		4 - 1		1,525	17 11/16						3/4		1 1/4
		5 - 1		1,590	17 15/16						7/8		1 1/4
14	16 1/4	5 - 1 1/8	3,130	2,360	19 7/8	17 3/4	14 1/4	4 5/8	2 1/2	1 1/8	7/8	8 3/8	1 7/16
		6 - 1 1/8		2,425	20 1/8						1		1 3/8
16	18	5 - 1 1/4	3,970	3,080	21 7/8	19 3/4	16 1/4	5	2 5/8	1 1/4	7/8	9 7/16	1 1/2
		6 - 1 1/4		3,185	22 1/8						1		1 1/2
		7 - 1 1/4		3,260	22 3/8						1 1/8		1 1/2
18	20 1/4	5 - 1 1/4	4,200	3,370	24	21 7/8	18 1/4	5 7/16	2 3/4	1 1/4	7/8	10 1/2	1 1/2
		6 - 1 1/4		3,475	24 1/4						1		1 1/2
		7 - 1 1/4		3,550	24 1/2						1 1/8		1 1/2
20	22 1/2	8 - 1 3/8	4,550	4,700	27 1/4	24 1/4	20 1/4	6	3	1 1/4	1 1/4	11 5/8	1 5/8
24	26 1/2	6 - 1 1/2	6,160	7,255	31	28 5/8	24 1/4	7 3/16	3 5/8	1 1/2	1	14	1 13/16
		7 - 1 1/2		7,365	31 1/4						1 1/8		1 15/16
		8 - 1 1/2		7,500	31 5/8						1 1/4		2 1/16
		9 - 1 1/2		7,630	32 1/8						1 1/2		1 3/4
30	32 1/2	8 - 1 7/8	7,290	12,690	38 1/2	35 1/2	30 1/4	8 15/16	4 1/2	1 3/4	1 1/4	17 7/16	2 1/4
		9 - 1 7/8		12,990	39						1 1/2		2 7/16
		10 - 1 7/8		13,400	39 7/8						1 7/8		2 1/8