

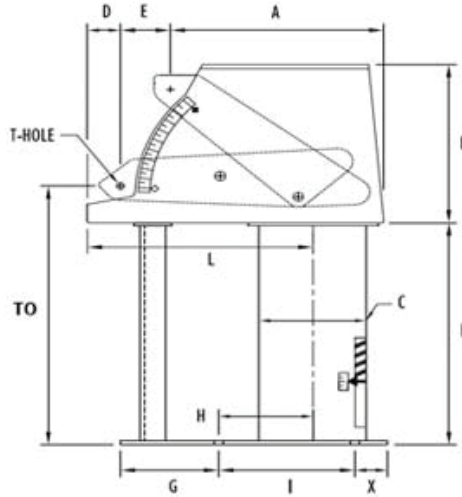
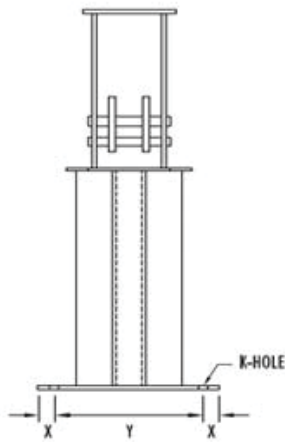
FIG. PTP 100-F

CONSTANT



www.pipingtech.com/ptp100-f

LAYOUT A



TO - Rod take out for up travel
 A - Minimum for down travel
 D - Minimum for up travel
 E - Maximum for the travel range
 L - Maximum for the load range
 WT - Maximum weight for the load range

ORDERING: Specify figure number, size, type, description, type, load, actual and direction of total travel. For load and travel not in the tables, please call for dimensions.

* Drawing shown for up travel

ENGINEERED PIPE SUPPORTS

PTP figure 100 type F (Layout-A) is a vertical constant designed to support piping from below using a Sway Strut. The base plate is bolted directly to the top of the steel or floor. It is important to understand that this constant has vertical movement subjected by the total travel and an axial movement (E) due to the angle of rotation. If axial movement cannot be tolerated, then a PTP figure 100 type U (vertical upthrust constant) would be appropriate for the application. For load and travel not in the tables, please call for dimensions.

Sway Strut Selection

LOAD (lb.)	0 650	651 1,500	1,501 4,500	4,501 8,000	8,001 11,630	11,631 15,700	15,701 20,700	20,701 27,200	27,201 33,500	33,501 68,200	68,201 120,000
Fig 2110 Fig 2120	A	B	C	1	2	3	4	5	6	7	8
T-HOLE	1/2	3/4	3/4	1	1	1 1/4	1 1/4	1 1/2	1 3/4	2	2 1/2

IMPORTANT NOTES:

All dimensions are in inches unless otherwise noted.

Total Travel 1 1/2 to 4 inches

LOAD RANGE (lb.)	K-HOLE	A	B	C	D	E	G	H	I	L	X	Y	WT (lb.)					
44-243	9/16	13 3/8	8 3/16	6 5/8	2	1 3/4	4	4 3/4	8	12 5/8	1	6 1/2	75					
244-1018	11/16	14 3/8	8 9/16	8 5/8	2	1 3/4	4 1/2	5 1/4	9 1/2	12 11/16	1	8	115					
1019-3516	13/16	14 7/16	9 9/16	8 5/8	2	1 3/4	5	5 1/4	9 1/2	12 11/16	1 1/2	8	230					
3517-7538	15/16	16 15/16	10 5/8	8 5/8	2 9/16	1 3/4	6 1/4	5 1/4	10	15 11/16	1 1/2	9	370					
7539-16159	1 1/8	19 1/16	13 3/16	12 3/4	3 13/16	1 3/4	7 1/4	7 11/16	15	17	1 1/2	15	1010					
16160-31490	1 3/8	19 3/16	16 11/16	12 3/4	5	1 3/4	9	7 3/8	15	18 1/8	1 3/4	17 1/2	1570					
LOAD RANGE (lb.)	44 243	244 357	358 475	476 632	633 841	842 1018	1019 1985	1986 2642	2643 3516	3517 4255	4256 5663	5664 7538	7539 11037	11038 14690	14691 16159	16160 19552	19553 26024	26025 31490
TO	15 7/8	17 1/4	18 1/4	16 1/4	17 1/4	19 1/4	22 3/8	24 3/8	26 3/8	29	32	36	38 7/8	42 7/8	47 7/8	51 1/2	54 1/2	65 1/2
F	13 1/2	14 1/2	15 1/2	13 1/2	14 1/2	16 1/2	18 3/4	20 3/4	22 3/4	25	28	32	33 1/4	37 1/4	42 1/4	44 1/2	47 1/2	58 1/2

*Take Out (TO) is for up travel [add 4 inches for down travel]

CONSTANTS_100.XLS-04/22/2017

Total Travel 4-1/2 to 6 inches

LOAD RANGE (lb.)	K-HOLE	A	B	C	D	E	G	H	I	L	X	Y	WT (lb.)					
34-183	9/16	15	10 5/16	6 5/8	1 7/8	2 5/8	5	4 3/4	8	15 1/8	1	6 1/2	85					
184-765	11/16	16 1/16	10 3/4	8 5/8	1 7/8	2 5/8	5 3/4	5 1/4	9 1/2	15 1/8	1	8	125					
766-2402	13/16	16 1/8	11 13/16	8 5/8	1 7/8	2 5/8	6	5 1/4	9 1/2	15 1/8	1 1/2	8	250					
2403-5663	15/16	18 5/8	12 7/8	8 5/8	2 5/8	2 5/8	7 1/2	5 1/4	10	18 5/16	1 1/2	9	400					
5664-12140	1 1/8	20 3/4	15	12 3/4	3 1/8	2 5/8	6 3/4	7 7/16	14	18 13/16	1 1/2	13 1/2	1030					
12141-23659	1 3/8	20 7/8	18 7/16	12 3/4	4 5/8	2 5/8	9	7 3/8	15	20 5/16	1 3/4	17 1/2	1600					
LOAD RANGE (lb.)	34 183	184 268	269 357	358 475	476 632	633 765	766 1491	1492 1985	1986 2402	2403 3197	3198 4680	4681 5663	5664 8292	8293 11037	11038 12140	12141 14690	14691 19552	19553 23659
TO	16	17 1/2	18 1/2	16 1/2	17 1/2	19 1/2	22 1/2	24 1/2	26 1/2	29 1/4	32 1/4	36 1/4	39 1/8	43 1/8	48 1/8	51 5/8	54 5/8	65 5/8
F	13 1/2	14 1/2	15 1/2	13 1/2	14 1/2	16 1/2	18 3/4	20 3/4	22 3/4	25	28	32	33 1/4	37 1/4	42 1/4	44 1/2	47 1/2	58 1/2

*Take Out (TO) is for up travel [add 6 inches for down travel]

CONSTANTS_100.XLS-04/22/2017



FIG. PTP 100-F

CONSTANT

LAYOUT A

ENGINEERED PIPE SUPPORTS

www.pipingtech.com/ptp100-f

Total Travel 6-1/2 to 8 inches

LOAD RANGE (lb.)	K-HOLE	A	B	C	D	E	G	H	I	L	X	Y	WT (lb.)					
27-151	9/16	16 3/4	12 9/16	6 5/8	2	3 9/16	6 3/4	4 3/4	8	17 7/8	1	6 1/2	95					
152-632	11/16	17 3/4	13	8 5/8	2	3 9/16	7	5 1/4	9 1/2	17 7/8	1	8	140					
633-1985	13/16	17 13/16	14	8 5/8	2	3 9/16	7 1/2	5 1/4	9 1/2	17 7/8	1 1/2	8	270					
1986-4680	15/16	20 1/4	14 9/16	8 5/8	2 1/2	3 9/16	8 1/8	5 1/4	10	20 3/4	1 1/2	9	415					
4681-10033	1 1/8	22 7/16	17 3/8	12 3/4	3 1/4	3 9/16	8 1/2	7 7/16	14	21 1/2	1 1/2	13 1/2	1080					
10034-19552	1 3/8	22 5/8	20 11/16	12 3/4	5 3/4	3 9/16	9	7 3/8	14 1/2	24	1 3/4	17 1/2	1640					
LOAD RANGE (lb.)	27 151	152 221	222 295	296 392	393 475	632 1120	1121 1640	1641 1985	1986 2642	2643 3516	3517 4680	4681 6230	6231 8292	8293 10003	10034 11037	11038 14690	14691 19552	
TO	16 1/4	17 3/4	18 3/4	16 3/4	17 3/4	19 3/4	22 3/4	24 3/4	26 3/4	29	32	36	39 1/2	43 1/2	48 1/2	52 1/4	55 1/4	66 1/4
F	13 1/2	14 1/2	15 1/2	13 1/2	14 1/2	16 1/2	18 3/4	20 3/4	22 3/4	25	28	32	33 1/4	37 1/4	42 1/4	44 1/2	47 1/2	58 1/2

*Take Out (TO) is for up travel [add 8 inches for down travel]

CONSTANTS_100.XLS-04/22/2017

Total Travel 8-1/2 to 10 inches

LOAD RANGE (lb.)	K-HOLE	A	B	C	D	E	G	H	I	L	X	Y	WT (lb.)					
22-125	9/16	18 3/8	14 7/16	6 5/8	2 1/8	4 1/2	9	4 3/4	8	20 5/8	1	6 1/2	110					
126-522	11/16	19 7/16	14 5/8	8 5/8	2 1/8	4 1/2	9 1/2	5 1/4	9 1/2	20 5/8	1	8	150					
523-1640	13/16	19 1/2	15 3/4	8 5/8	2 1/8	4 1/2	9	5 1/4	9 1/2	20 5/8	1 1/2	8	300					
1641-3868	15/16	21 3/4	16 1/4	8 5/8	2 3/8	4 1/2	10 3/4	5 1/4	10	23 1/16	1 1/2	9	445					
3869-8292	1 1/8	24 1/8	19	12 3/4	2 7/8	4 1/2	9 1/2	7 7/16	14	23 3/4	1 1/2	13 1/2	1120					
8293-16159	1 3/8	24 1/4	21 1/16	12 3/4	4 1/8	4 1/2	9 3/4	7 3/8	14 1/2	25	1 3/4	17 1/2	1665					
LOAD RANGE (lb.)	22 125	126 183	184 243	244 324	325 432	433 522	523 1018	1019 1355	1356 1640	1641 2183	2184 2906	2907 3868	3869 5148	5149 6853	6854 8292	8293 9121	9122 12140	12141 16159
TO	16 1/8	17 3/8	18 3/8	16 3/8	17 3/8	19 3/8	22 1/2	24 1/2	26 1/2	29 1/8	32 1/8	36 1/8	39 5/8	43 5/8	48 5/8	52	55	66
F	13 1/2	14 1/2	15 1/2	13 1/2	14 1/2	16 1/2	18 3/4	20 3/4	22 3/4	25	28	32	33 1/4	37 1/4	42 1/4	44 1/2	47 1/2	58 1/2

*Take Out (TO) is for up travel [add 10 inches for down travel]

CONSTANTS_100.XLS-04/22/2017

Total Travel 10-1/2 to 12 inches

LOAD RANGE (lb.)	K-HOLE	A	B	C	D	E	G	H	I	L	X	Y	WT (lb.)					
20-103	9/16	20 1/8	16 5/8	6 5/8	2 1/4	5 3/8	11	4 3/4	8	23 5/16	1	6 1/2	125					
104-432	11/16	21 1/8	17	8 5/8	2 1/4	5 3/8	10 1/2	5 1/4	9 1/2	23 5/16	1	8	165					
433-1491	13/16	21 3/16	17 11/16	8 5/8	2 1/4	5 3/8	11	5 1/4	9 1/2	23 5/16	1 1/2	8	315					
1492-3197	15/16	23 5/8	18 1/4	8 5/8	2 1/4	5 3/8	12 1/2	5 1/4	10	25 3/4	1 1/2	9 1/2	490					
3198-6853	1 1/8	25 13/16	20 7/8	12 3/4	3	5 3/8	11 1/2	7 7/16	14	26 1/2	1 1/2	13 1/2	1175					
6854-13354	1 3/8	25 15/16	23 1/16	12 3/4	4 1/4	5 3/8	12 1/4	7 3/8	14 1/2	27 5/8	1 3/4	17 1/2	1750					
LOAD RANGE (lb.)	20 103	104 151	152 201	202 268	269 357	358 432	433 841	842 1120	1121 1491	1492 1640	1641 2401	2402 3197	3198 4680	4681 6230	6231 6853	6854 8292	8293 11037	11038 13354
TO	16 1/4	17 3/4	18 3/4	16 3/4	17 3/4	19 3/4	22 1/2	24 1/2	26 1/2	29 1/8	32 1/8	36 1/8	39 1/2	43 1/2	48 1/2	52	55	66
F	13 1/2	14 1/2	15 1/2	13 1/2	14 1/2	16 1/2	18 3/4	20 3/4	22 3/4	25	28	32	33 1/4	37 1/4	42 1/4	44 1/2	47 1/2	58 1/2

*Take Out (TO) is for up travel [add 12 inches for down travel]

CONSTANTS_100.XLS-04/22/2017

Total Travel 12-1/2 to 14 inches

LOAD RANGE (lb.)	K-HOLE	A	B	C	D	E	G	H	I	L	X	Y	WT (lb.)					
19-94	9/16	21 3/4	18 5/16	6 5/8	2 1/8	6 5/16	13	4 3/4	8	25 13/16	1	6 1/2	145					
95-392	11/16	22 13/16	18 13/16	8 5/8	2 1/8	6 5/16	13	5 1/4	9 1/2	25 13/16	1	8	185					
393-1232	13/16	22 7/8	19 15/16	8 5/8	2 1/8	6 5/16	13	5 1/4	9 1/2	25 13/16	1 1/2	8	345					
1233-2906	15/16	25 1/4	20	8 5/8	2 3/8	6 5/16	14 1/2	5 1/4	10	28 7/16	1 1/2	9 1/2	525					
2907-6230	1 1/8	27 1/2	22 7/8	12 3/4	2 7/8	6 5/16	13 1/2	7 7/16	14	28 15/16	1 1/2	13 1/2	1225					
6231-12140	1 3/8	27 9/16	24 9/16	12 3/4	3 5/8	6 5/16	13 3/4	7 3/8	14 1/2	29 3/4	1 3/4	17 1/2	1775					
LOAD RANGE (lb.)	19 94	95 137	138 183	184 221	222 295	296 392	393 695	696 1018	1019 1232	1233 1640	1641 2183	2184 2906	2907 3868	3869 5148	5149 6230	6231 6853	6854 9121	9122 12140
TO	16	17 1/2	18 1/2	16 1/2	17 1/2	19 1/2	22 3/4	24 3/4	26 3/4	28 7/8	31 7/8	35 7/8	39 1/2	43 1/2	48 1/2	52	55	66
F	13 1/2	14 1/2	15 1/2	13 1/2	14 1/2	16 1/2	18 3/4	20 3/4	22 3/4	25	28	32	33 1/4	37 1/4	42 1/4	44 1/2	47 1/2	58 1/2

*Take Out (TO) is for up travel [add 14 inches for down travel]

CONSTANTS_100.XLS-04/22/2017

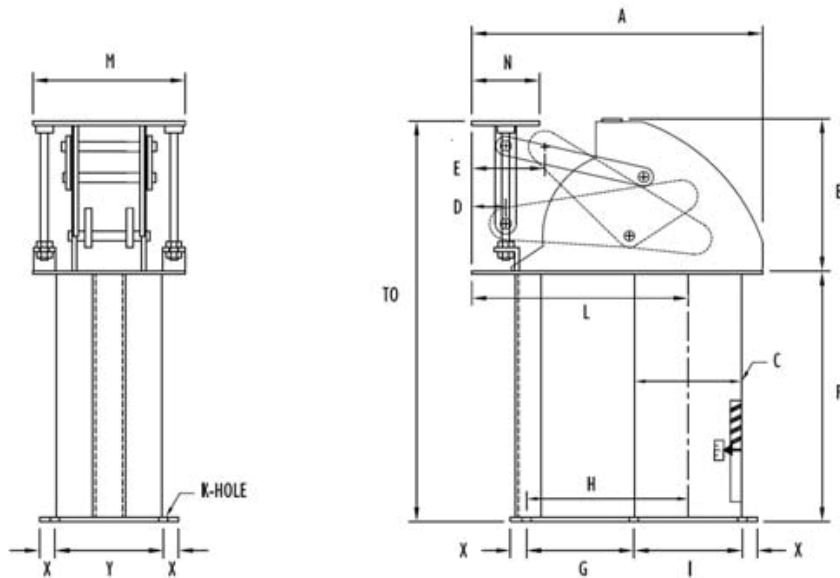


FIG. PTP 100-F

CONSTANT

www.pipingtech.com/ptp100-f

LAYOUT B



TO - Rod take out for up travel
 D - Minimum for up travel
 E - Maximum for down travel
 L - Maximum for the load range
 WT - Maximum weight for the load range

ORDERING: Specify figure number, size, type, description, type, load, actual and direction of total travel. For load and travel not in the tables, please call for dimensions.

* Drawing shown for up travel

ENGINEERED PIPE SUPPORTS

PTP figure 100 type F (Layout-B) is a vertical constant designed to support piping from below. The base plate is bolted directly to the top of the steel or floor. It is important to understand that this constant has vertical movement subjected by the total travel and an axial movement (E - D) due to the angle of rotation. If axial movement cannot be tolerated, then a PTP figure 100 type U (horizontal upthrust constant) would be appropriate for the application.. For load and travel not in the tables, please call for dimensions.

IMPORTANT NOTES: All dimensions are in inches unless otherwise noted.

Total Travel 1-1/2 to 4 inches

LOAD RANGE (lb.)	K-HOLE	A	B	C	D	E	G	H	I	L	M	N	X	Y	WT (lb.)			
44-243	9/16	18 1/8	7	6 5/8	2 5/8	4 3/16	7 1/2	10 3/4	6 1/2	13 7/8	10	5 1/4	1	6 1/2	90			
244-1018	11/16	19 1/8	9	8 5/8	2 5/8	4 3/16	6 1/2	10 3/4	8 1/2	14	10	5 1/4	1	8	130			
1019-3516	13/16	20 1/4	11 1/4	8 5/8	3 1/8	4 11/16	7	11 1/4	8 1/2	14 1/2	13	6 1/4	1 1/2	8	280			
3517-7538	15/16	24 5/8	12 1/2	8 5/8	4 5/8	6 3/16	9 1/4	14	9 1/2	18 1/2	15	9 1/4	1 1/2	9	470			
7539-16159	1 1/8	27 5/8	16 1/4	12 3/4	5	6 7/16	8 1/2	15 3/8	13 3/4	18 3/4	17	10	1 1/2	14	1210			
16160-31490	1 3/8	29 7/8	19 3/8	12 3/4	6 13/16	8 3/8	9 1/2	16 5/8	14 1/4	20 1/2	20	13 5/8	1 3/4	16 1/2	1910			
LOAD RANGE (lb.)	44	244	325	433	576	766	1019	1805	2643	3517	4256	5664	7539	10034	13355	16160	17776	23660
TO	21 3/4	24 1/2	25 1/2	23 1/2	24 1/2	26 1/2	31	33	35	38 3/4	41 3/4	45 3/4	51 5/8	55 5/8	60 5/8	66 3/8	69 3/8	80 3/8
F	13 1/2	14 1/2	15 1/2	13 1/2	14 1/2	16 1/2	18 3/4	20 3/4	22 3/4	25	28	32	33 1/4	37 1/4	42 1/4	44 1/2	47 1/2	58 1/2

*Take Out (TO) is for up travel [add 4 inches for down travel]

CONSTANTS_100.XLS-04/22/2017

Total Travel 4-1/2 to 6 inches

LOAD RANGE (lb.)	K-HOLE	A	B	C	D	E	G	H	I	L	M	N	X	Y	WT (lb.)			
34-183	9/16	21 1/4	7	6 5/8	2 13/16	5 3/16	10 1/2	13 3/4	6 1/2	17	10	5 5/8	1	6 1/2	95			
184-765	11/16	22 1/4	9 1/8	8 5/8	2 3/4	5 1/8	10 1/4	14 1/2	8 1/2	17	10	5 1/2	1	8	135			
766-2402	13/16	23	11 1/4	8 5/8	3 1/8	5 1/2	9 1/2	13 3/4	8 1/2	17 1/4	13	6 1/4	1 1/2	8	295			
2403-5663	15/16	27 1/4	12 1/2	8 5/8	4 7/16	6 13/16	12 1/2	17 1/4	9 1/2	21	15	8 7/8	1 1/2	9	495			
5664-12140	1 1/8	30	17 1/4	12 3/4	5 3/16	7 9/16	10 3/4	17 1/2	13 1/2	21 3/4	17	10 3/8	1 1/2	14	1255			
12141-23659	1 3/8	33	19 5/8	12 3/4	7	9 3/8	11 1/2	18 5/8	14 1/4	23 5/8	20	14	1 3/4	16 1/2	1960			
LOAD RANGE (lb.)	34	184	244	325	433	576	766	1356	1805	2403	3198	4256	5664	7539	10034	12141	13355	17776
TO	21 3/4	24 3/4	25 3/4	23 3/4	24 3/4	26 3/4	31 3/8	33 3/8	35 3/8	39	42	46	52 5/8	56 5/8	61 5/8	66 5/8	69 5/8	80 5/8
F	13 1/2	14 1/2	15 1/2	13 1/2	14 1/2	16 1/2	18 3/4	20 3/4	22 3/4	25	28	32	33 1/4	37 1/4	42 1/4	44 1/2	47 1/2	58 1/2

*Take Out (TO) is for up travel [add 6 inches for down travel]

CONSTANTS_100.XLS-04/22/2017



FIG. PTP 100-F

CONSTANT

LAYOUT B

ENGINEERED PIPE SUPPORTS

www.pipingtech.com/ptp100-f

Total Travel 6-1/2 to 8 inches

LOAD RANGE (lb.)	K-HOLE	A	B	C	D	E	G	H	I	L	M	N	X	Y	WT (lb.)			
25-151	9/16	24 3/8	8	6 5/8	3 1/8	6 5/16	14 1/4	17 1/2	6 1/2	20 1/8	10	6 1/4	1	6 1/2	105			
152-632	11/16	25 3/8	9 1/2	8 5/8	3 1/8	6 5/16	13	17 1/4	8 1/2	20 1/8	10	6 1/4	1	8	145			
633-1985	13/16	26 3/8	11 3/8	8 5/8	3 5/8	6 13/16	13	17 1/4	8 1/2	20 5/8	13	7 1/4	1 1/2	8	320			
1986-4680	15/16	30	14 3/4	8 5/8	4 1/2	7 11/16	15 3/8	20	9 1/4	23 7/8	15	9	1 1/2	9	570			
4681-10033	1 1/8	32 1/2	17 1/2	12 3/4	5	8 3/16	13 3/4	20 3/8	13 1/4	24 3/8	17	10	1 1/2	14	1300			
10034-19552	1 3/8	35 5/8	20 7/8	12 3/4	7 5/16	10 1/2	13 1/4	20 3/8	14 1/4	26 3/4	20	14 5/8	1 3/4	16 1/2	2070			
LOAD RANGE (lb.)	25 151	152 201	202 268	269 357	358 475	476 632	633 1120	1121 1491	1492 1985	1986 2401	2402 3197	3198 4680	4681 5664	5664 7538	7539 9120	9121 10033	10034 13354	13355 19552
TO	22 3/4	25	26	24	25	27	31 3/8	33 3/8	35 3/8	42 1/2	45 1/2	49 1/2	52 7/8	56 7/8	61 7/8	68 1/2	71 1/2	82 1/2
F	13 1/2	14 1/2	15 1/2	13 1/2	14 1/2	16 1/2	18 3/4	20 3/4	22 3/4	25	28	32	33 1/4	37 1/4	42 1/4	44 1/2	47 1/2	58 1/2

*Take Out (TO) is for up travel [add 8 inches for down travel]

CONSTANTS_100.XLS-04/22/2017

Total Travel 8-1/2 to 10 inches

LOAD RANGE (lb.)	K-HOLE	A	B	C	D	E	G	H	I	L	M	N	X	Y	WT (lb.)			
21-125	9/16	27 1/4	8 3/4	6 5/8	3 1/8	7 1/8	16 1/2	19 3/4	6 1/2	23	10	6 1/4	1	6 1/2	120			
126-522	11/16	28	10	8 5/8	3 1/8	7 1/8	15 1/2	19 3/4	8 1/2	22 7/8	10	6 1/4	1	8	155			
523-1640	13/16	29 1/4	12 1/8	8 5/8	3 5/8	7 5/8	14 1/2	18 3/4	8 1/2	23 1/2	13	7 1/4	1 1/2	8	340			
1641-3868	15/16	33	15 1/4	8 5/8	4 1/2	8 1/2	17 3/4	22 1/2	9 1/2	26 3/4	15	9	1 1/2	9	605			
3869-8292	1 1/8	35 1/4	18 1/2	12 3/4	5	9	16 3/4	23 3/8	13 1/4	27 1/4	17	10	1 1/2	14	1355			
8293-16159	1 3/8	38	22 1/8	12 3/4	7 5/16	11 5/16	17 1/2	24 3/8	13 3/4	29 1/2	20	14 5/8	1 3/4	16 1/2	2095			
LOAD RANGE (lb.)	21 125	126 166	167 221	222 295	296 392	393 522	523 926	927 1232	1233 1640	1641 1985	1986 2906	2907 3868	3869 5148	5149 6853	6854 8292	8293 9121	9122 12140	12141 16159
TO	23	25 3/4	26 3/4	24 3/4	25 3/4	27 3/4	32	34	36	42 1/2	45 1/2	49 1/2	53 7/8	57 7/8	62 7/8	68 1/2	71 1/2	82 1/2
F	13 1/2	14 1/2	15 1/2	13 1/2	14 1/2	16 1/2	18 3/4	20 3/4	22 3/4	25	28	32	33 1/4	37 1/4	42 1/4	44 1/2	47 1/2	58 1/2

*Take Out (TO) is for up travel [add 10 inches for down travel]

CONSTANTS_100.XLS-04/22/2017

Total Travel 10-1/2 to 12 inches

LOAD RANGE (lb.)	K-HOLE	A	B	C	D	E	G	H	I	L	M	N	X	Y	WT (lb.)			
19-103	9/16	30	9 1/2	6 5/8	3 1/8	8	19 1/4	22 1/2	6 1/2	25 7/8	10	6 1/4	1	6 1/2	130			
104-432	11/16	31	10 1/2	8 5/8	3 1/8	8	18 1/2	22 3/4	8 1/2	25 3/4	10	6 1/4	1	8	165			
433-1491	13/16	32	12 5/8	8 5/8	3 5/8	8 1/2	18 1/2	22 3/4	8 1/2	26 1/4	13	7 1/4	1 1/2	8	365			
1492-3197	15/16	35 3/4	15 1/4	8 5/8	4 1/2	9 3/8	19 1/2	24 1/4	9 1/2	29 5/8	15	9	1 1/2	9	615			
3198-6853	1 1/8	38 1/4	18 1/2	12 3/4	5	9 7/8	18 3/4	25 3/8	13 1/4	30 1/8	17	10	1 1/2	14	1400			
6854-13354	1 3/8	40 1/4	22 1/4	12 3/4	7 5/16	12 3/16	17 3/4	24 7/8	14 1/4	32 3/8	20	14 5/8	1 3/4	16 1/2	2140			
LOAD RANGE (lb.)	19 103	104 137	138 183	184 243	244 324	325 432	433 765	766 1120	1121 1491	1492 1804	1805 2401	2402 3197	3198 4255	4256 5663	5664 6853	6854 7538	7539 10033	10034 13354
TO	24	26	27	25	26	28	32 5/8	34 5/8	36 5/8	42 1/4	45 1/4	49 1/4	54 5/8	58 5/8	63 5/8	70	73	84
F	13 1/2	14 1/2	15 1/2	13 1/2	14 1/2	16 1/2	18 3/4	20 3/4	22 3/4	25	28	32	33 1/4	37 1/4	42 1/4	44 1/2	47 1/2	58 1/2

*Take Out (TO) is for up travel [add 12 inches for down travel]

CONSTANTS_100.XLS-04/22/2017

Total Travel 12-1/2 to 14 inches

LOAD RANGE (lb.)	K-HOLE	A	B	C	D	E	G	H	I	L	M	N	X	Y	WT (lb.)			
17-94	9/16	32 7/8	10	6 5/8	3 1/8	8 13/16	21 1/2	24 3/4	6 1/2	28 5/8	10	6 1/4	1	6 1/2	135			
95-392	11/16	33 3/4	11 1/2	8 5/8	3 1/8	8 13/16	21	25 1/4	8 1/2	28 1/2	10	6 1/4	1	8	175			
393-1232	13/16	34 7/8	13	8 5/8	3 5/8	9 5/16	21 1/2	25 3/4	8 1/2	29 1/8	13	7 1/4	1 1/2	8	380			
1233-2906	15/16	38 5/8	16 3/4	8 5/8	4 1/2	10 3/16	23 1/2	28 1/4	9 1/2	32 3/8	15	9	1 1/2	9	665			
2907-6230	1 1/8	41	19	12 3/4	5	10 11/16	21 3/4	28 3/8	13 1/4	32 7/8	17	10	1 1/2	14	1450			
6231-12140	1 3/8	44	23	12 3/4	7 5/16	13	20 1/4	27 3/8	14 1/4	35 1/4	20	14 5/8	1 3/4	16 1/2	2205			
LOAD RANGE (lb.)	17 94	95 125	126 166	167 221	222 295	296 392	393 695	696 926	927 1232	1233 1491	1492 2183	2184 2906	2907 3868	3869 5148	5149 6230	6231 6853	6854 9121	9122 12140
TO	24 1/4	27 1/4	28 1/4	26 1/4	27 1/4	29 1/4	33	35	37	44	47	51	55 1/2	59 1/2	64 1/2	70 1/2	73 1/2	84 1/2
F	13 1/2	14 1/2	15 1/2	13 1/2	14 1/2	16 1/2	18 3/4	20 3/4	22 3/4	25	28	32	33 1/4	37 1/4	42 1/4	44 1/2	47 1/2	58 1/2

*Take Out (TO) is for up travel [add 14 inches for down travel]

CONSTANTS_100.XLS-04/22/2017